

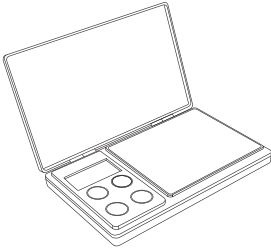


# TRITON<sup>®</sup> XL



**USER MANUAL**

# TRITON® XL



ENGLISH

Thank you for purchasing the My Weigh® TRITON® XL digital pocket scale. Please read **all** operating instructions **carefully** before use. This electronic scale is a precision instrument. With normal care and proper treatment, it will provide years of reliable service. For more information please visit **[www.myweigh.com](http://www.myweigh.com)**

Never load the scale with more than the maximum capacity. Although the TRITON® XL is designed to be extremely durable with extra overload protection built into the case, **overloading will permanently damage it!** Avoid any exposure to extreme heat or cold, your scale works better when operated at normal room temperature. Keep your scale in a clean environment. Dust, dirt, moisture, vibration, air currents and/or a close proximity to other electronic equipment can **all** cause an adverse effect on the reliability and accuracy of your scale. Handle with care. **Gently apply all** items to be weighed onto tray top. Avoid shaking, dropping or otherwise shocking the scale. Scales are delicate instruments and unlike cellular phones, scales have delicate sensors that determine how much an item weighs. If you drop or shock your scale, these sensors “feel” the shock and are sometimes destroyed. This happens with **all** digital scales. We design our scales to be as resistant to shock or drops as possible, however there is no way for us to protect 100% against load cell or sensor damage.

Failure to follow these instructions will void your warranty.

Always **allow** the scale to acclimate to normal room temperature for at least one hour before use. Give your scale sufficient warm up time. Usually 30-60 seconds before calibration to give the internal components a chance to stabilize.

## BATTERIES

---

Low Batteries & bad battery connections are the #1 cause of scale malfunction and inaccuracy! We test all of our scale returns from consumers and 60% of them are battery related problems. This sounds silly but it's true! A scale will perform poorly when it has low batteries. Use good quality batteries & replace them often ( Remove the batteries if you plan to store the scale for longer then 14 days). We include good quality batteries with all of our scales but they can run low in storage. If your scale simply won't turn on while on battery power, it is often caused by loose battery connections.

### Battery installation


- a) Press and lift open the battery cover located at the bottom of the unit.
- b) Insert the batteries and make sure the polarity is correct.
- c) Close the battery cover until it clicks shut.

Note : If the battery symbol appears in the display, it means low battery power. It is time to replace the batteries.

## OPERATION INSTRUCTIONS

---

### Weighing Procedures

1. Press [  ] to turn on or off the scale.
2. Press [UNIT] to select a weighing unit g, gn, lb:oz, 1/4oz, 1/8oz, ct, dwt.
3. Start weighing

### Tare

Tare can be used for eliminating the weight value of an empty container. Place an empty container on the scale and press [ $\rightarrow 0 \leftarrow$ ]. After 3 seconds place the items to be weighed in the container. NOTE: When all weight is removed from the weighing tray, the tared value of a container will be displayed as a negative number. Press [ $\rightarrow 0 \leftarrow$ ] again to return the scale to zero.

## CALIBRATION

---

When to calibrate - calibration is recommended for best results.

Calibration may be required when the scale is first set up for use, or if the scale is moved to a different altitude or new location. This is necessary because the weight of a mass in one location is not necessarily the same in another location. Also, with time and use, mechanical deviations can occur.

**To Calibrate the Triton® XL:** you must have an accurate 1000g weight in order to calibrate.

1. Turn on the scale.
2. Press and hold the UNIT button, the display will read CAL.
3. Press the UNIT button again. The display will read 1000.0 and flash.
4. Put a 1KG weight on the tray until the display reads PASS.
5. Remove the 1KG weight and turn off the scale.
6. Turn the scale on again and the calibration is finished.

## FEATURES

---

### Power Up Segment Test

When first turning the unit on, the scale will display 8.8.8.8.8 and then reset to 0.0. Once this is complete the scale is then ready to begin weighing.

### Overload indicator

When the display shows "Err", this indicates an overload. Remove excessive load immediately. Remember: you can permanently damage the scale and void your warranty by overloading it!

### Negative Value

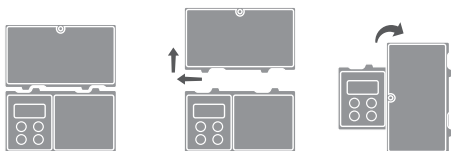
Any tared value will be displayed as a negative number once all weight is removed, press [←0←] to re-zero the scale.

### Auto off

An auto off feature is provided to conserve battery power. The unit will automatically turn off after 2 minutes of inactivity.

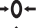


### Expansion Tray/Cover

The protective cover of the Triton® XL is designed to also be used as a platform expansion tray. The cover can only be removed when the scale is fully open.



## DISPLAY SYMBOLS

---

-  Scale at ZERO
-  Scale is in TARE mode.
-  Batteries need replacing

# SPECIFICATIONS

<b>Capacity</b>	1000g x 0.1g	<b>Units</b>	g, gn, lb:oz, 1/4oz, 1/8oz, ct, dwt
<b>Auto-OFF</b>	2 min.		
<b>Scale dimension</b>	187mm x 115mm x 20mm		
<b>Tray dimension</b>	117mm x 102mm		
<b>Net/gross weight</b>	320g		
<b>Operating temperature</b>	Optimum 10-30°C (50-86°F)		
<b>Power Source</b>	2 x AAA batteries		



COVER DOUBLES  
AS TRAY



[www.myweigh.com](http://www.myweigh.com)