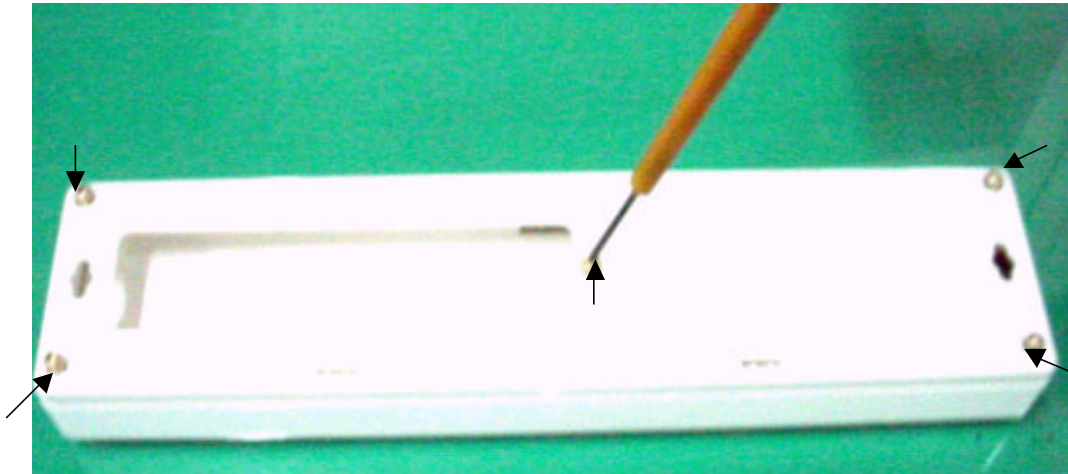
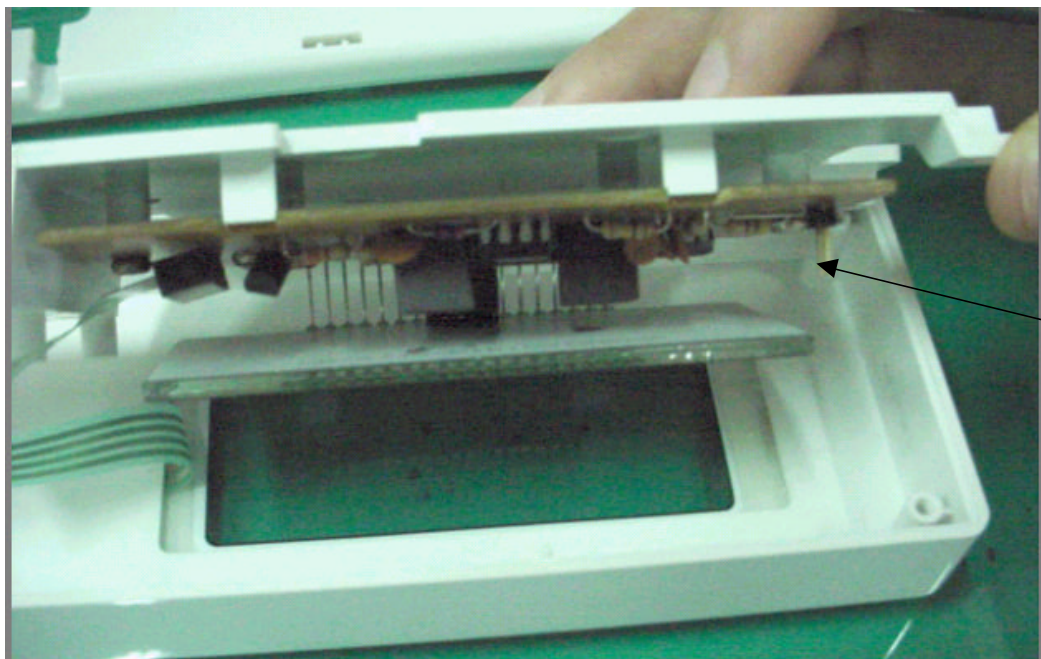


Calibration process of Baby scale MBS2010



1. Remove the 5 screws.



TEST
PIN

2. Open the housing of the display, then press the ON key.
 3. Using a metal screw touch the "TEST PIN", the range of ZERO is 500-3500count.
 4. Then press the ON key again, display shows ZERO.
 5. Put 20kg weight on to the scale, display shows span count (1250-3750counter)
 6. Pls press the ON key again, it shows "Cal", then shows 20.00kg.
- The calibration is finished.